

Research Topic:

SOCIAL INCLUSION IN COMMUNE LAND USE PLANNING (CLUP) IN CAMBODIA,
A CASE STUDY OF O’KRIENG COMMUNE, KRATIE PROVINCE

Grantee: Mr. RORN NARO

Alumni Research Grants, Round 2

Date: 30 November 2022

Contents

Abstract	1
Chapter One: Introduction	2
2.1. The RGC's regulatory frameworks and policies on CLUP	5
a. Commune Land Use Planning in O'Krieng Commune (O'CLUP), 2009-2022.....	5
b. Implementation Manual on Commune Land Use Planning (known as Green Book)	6
c. Sub-Degree No. 72 ANK.BR on Commune/Sangkat Land Use Planning Procedure, May 05, 2009	8
d. Prakas/Declaration No. 115 BRK.MLMUPC on Procedure for budget proposal and uses for Commune/Sangkat Land Use Planning.....	8
2.1. Instruments to promote public participation in CLUP planning.....	8
a. Project outreach.....	9
b. Stakeholder Engagement Plan (SEP).....	9
c. Grievance Redress Mechanism (GRM)	9
d. Project disclosure	10
2.2. IAP2 (International Association Public Participation) Spectrum	10
Chapter 3: Methodology	12
Expected Limitations.....	15
Chapter 4: Findings.....	16
4.1. The level of public involvement in the CLUP process, in O'Krieng commune.....	16
4.2. Reasons of the Lack of Public Participation	18
4.3. Adverse impacts of limited public involvement in CLUP	20
4.4. Solutions and recommendations	21
4.4.1. Suggested solutions from the local residents.....	21
4.4.2. Recommended solutions.....	22
Chapter Five: Conclusion.....	24
References.....	25
Appendix 1: Questionnaire for CLUP experts.....	27
Appendix 2: Questionnaire for Local Authorities in O'Krieng commune	32
Appendix 3: Questionnaire for the residents in O'Krieng commune	36
Appendix 4: Questionnaire for focus group discussion in O'Krieng commune.....	40
Appendix 5: Consent Form	43

List of figures:

Figure 1: International Association of Public Participation Spectrum (IAP2 2011)	11
Figure 2: A Geographic map of O’Krieng Commune in Kratie Province	13
Figure 3 Level of CLUP acknowledgement	17
Figure 4 Level of Public Participation in O'CLUP, by Tasks	17

Abbreviation

CDP	:	Commune Development Plan
CLUP	:	Commune Land Use Planning
CIP	:	Commune Investment Plan
D-LUP	:	District-Land Use Planning
GRM	:	Grievance Redress Mechanism
IAP2	:	International Association for Public Participation
MLMUPC	:	Ministry of Land Management, Urban Planning, and Construction
NRM&L	:	Natural Resource Management and Livelihood Program
O'CLUP	:	Commune Land Use Planning in O'Krieng Commune
PDLMUPCC	:	Provincial Department of Land Management, Urban Planning, Construction, and Cadastre
P-LUP	:	Provincial Land Use Planning
RGC	:	Royal Government of Cambodia
SDG	:	Sustainable Development Goals
SEP	:	Stakeholder Engagement Plan

Abstract

Social inclusion is a significant issue to be considered in planning globally; however, it is most likely to be neglected in some planning in Cambodia. Among the plans, Commune Land Use Planning (CLUP) is one of the most remarkable land-use planning in which public participation is mandatory but tends to be limited in this country. The plan aims to manage and effectively utilize the natural resource sustainably and fairly within the community. Up to 2022, 95 CLUPs have been approved by the Ministry of Land Management, Urban planning, and Construction (MLMUPC, 2022). Surprisingly, this planning tends to hardly involve the public in their discussion, although the effectiveness of CLUP mainly depends on the voice of residents, including the indigenous and vulnerable groups, because they are the direct users in the commune. This public inclusion links to the SDG 11 of the United Nations on “Sustainable Cities and Communities”, which focuses on promoting livable and inclusive cities and communities. The lack of public participation in commune planning will lead to unsustainable development. Hence, the research will explore different aspects behind the social involvement toward CLUP in O’Krieng commune through qualitative and quantitative analysis by interviewing 112 participants from CLUP planners, authorities, the public, vulnerable groups, and indigenous people. To monitor and evaluate the participation level in CLUP, this research will use the International Association for Public Participation (IAP2)’s Spectrum as a tool for the project outreach at the end of the study.

The research found that social inclusion in CLUP process in O’Krieng commune is identified as having a “low” involvement rate. However, most interviewees claimed that public participation is necessary for planning. Therefore, diverse solutions to encourage public participation, including planning outreach activities, stakeholder engagement plans, grievance redress mechanisms and public disclosure, will be thoroughly recommended.

Chapter One: Introduction

In the regulatory framework aspects, most countries have put public participation in the governance's regulations, while some remain disoriented about the importance of using these tools. However, the citizens' engagement in government planning will help bring their needs to the democratic government (Holmes 2022). Similarly, according to the transformative and central promise of the 2030 Agenda for Sustainable Development Goal, it is a commitment to "Leave no one behind". This means that social inclusion is highly required to promote sustainable development, especially in the commune as small-scale planning.

In Cambodia, there is also an encouragement of public involvement in Land Use Planning policy. Based on the official Decision Letter, No. 041, on "Detailed Procedure of Commune Land Use Planning", it is declared that social inclusion is beneficial for the planning. The Letter shows that they are two of nine principal steps in the above procedure of the CLUP process, mentioning the requirement of public participation in planning. Step one on "Project outreach and Data collection" aims to promote understanding of the project benefits to the residents via community events and advertisement. The sixth step is "Public Displays". It intends to display publicly the primary CLUP report that planners have produced based on the primary and secondary data collected (General Department of Land Management 2016). The Decision Letter comprehensively designs inclusive planning where residents are welcome to involve in the planning process.

According to MLMUPC (2022), 95 CLUP reports have been published and approved by the Ministry of Land Management, Urban Planning, and Construction. Nevertheless, public involvement is unlikely to be discussed and illustrated in the reports although it has included in Step 2 and 6 of the above Decision Letter. For instance, the plan to encourage public engagement and hear public concerns or grievances cannot be found in the CLUP process. Therefore, this research will explore the level of public participation and its benefits on community planning and the suitable solutions and recommendations to promote involvement in the CLUP.

The research will respond three main research questions as shown below:

- What is the level of public involvement, including vulnerable groups and indigenous people, in the actual practice of the CLUP process, a case study of O'Krieng?
- What are the adverse impacts possibly caused by the limited public participation in the CLUP process toward the community's sustainable development?

- What are the leading solutions to promote social inclusion in the CLUP process in Cambodia?

CLUP is a comprehensive plan to develop a commune sustainably. Without the involvement of the public, who are the final beneficiaries or victims in the community, the project result will be biased and not viable. The main object of CLUP is to promote better living conditions for residents and protect the community's natural resources. Hence, the voices of the actual and final beneficiaries who will settle there are necessary for the project's continuation. The involvement of the public will deliver reliable power for sharpening policy and decision-making, as well as to engage the local government to build better strategic land use planning through the contribution of all parties.

In Cambodia, public participation is a process that has been introduced in both official and non-official terms. Many activities and policy implementations, such as elections, primary educational campaigns, town hall meetings, stakeholder meetings, community meetings, one-way and two-way discussions, and other related activities, have been conducted with public participation. However, according to the General Department of Land Management and Urban Planning (2009) and Prakas (Declaration) No.115 (2011), there is no introduction of public participation emphasizing the decision-making process on land use planning. This can imply that stakeholder engagement in decision-making is not identified, and the decision-making process from the local to the national level in Cambodia is not fully open to the public. Furthermore, the absence of official strategies and public participation tools in the policy implementation phase causes the low effectiveness of public participation. Thus, many residents encounter the negative consequences of land use planning development in the commune because the development direction is not intertwined with the local needs.

This research will examine the interview results, received from a diverse background of the interviewees in O'Krieng Commune, Kratie Province, in order to answer to three questions above. Regarding the level of public participation, this research will examine the ability and opportunity of each individual to elaborate on their engagement rate. The level of public participation will help the research team to identify the participation rate. Furthermore, this research will find out different information on the negative impacts of not fully participating in the collaborative planning process at the CLUP level. Then, this research will discuss the solutions which are applicable to improving public participation in the CLUP process. According to the MLMUPC (2020), the featuring of the Project Outreach, Stakeholder Engagement Plan (SEP), Grievance Redress Mechanism (GRM), and Project Disclosure in CLUP will be crucial solutions for to encourage potential stakeholders to contribute their ideas for the public benefits in planning. These tools will concisely discuss in the

literature review (Chapter 2). These instruments will become an important mechanism and principal key for the local government to involve further in land use planning. Our research also aims to find out the perceptions of citizens on using these fundamental solutions for enhancing the level of public involvement.

Chapter Two: Literature Review

This chapter will review the literature concerning land-use planning regulations at the commune level. This study aims to evaluate and validate the accessibility of the public participation of the residents to land-use planning regulation and implementation. While the commune land-use planning is significant for the development of the commune level, this review will mainly focus on the regulatory framework and policy implementation from the Royal Cambodian Government (section 2.1).

This section will then introduce the existing instruments to promote public inclusion in planning. The tools, including the Project outreach, Stakeholder Engagement Plan (SEP), Grievance Redress Mechanism (GRM), and Project Disclosure, will be discussed in section 2.2. The instruments are introduced by some credit supported projects in Cambodia, such as the World Bank. An experience from developing countries concerning the instruments will be reviewed in this research as well.

2.1. The RGC's regulatory frameworks and policies on CLUP

This part mainly reviews four sources, including the approved books/manual, National Sub-degree, and Declaration Letter published by the government of Cambodia, as explained below:

- Commune Land Use Planning in O’Krieng Commune, 2009-2022.
- Implementation Manual on Commune Land Use Planning 2009,
- Sub-Degree No. 72 ANK.BR on Commune/Sangkat Land Use Planning Procedure (May 05, 2009),
- Declaration Letter No. 115 BRK.MLMUPC on Procedure for budget proposal and uses for Commune/Sangkat Land Use Planning (June 17, 2011).

a. Commune Land Use Planning in O’Krieng Commune (O’CLUP), 2009-2022

Commune Land Use Planning in O’Krieng commune, 2009-2022, is an official 15-year commune plan. It was prepared by the O’Krieng Commune Council, with the cooperation of the District-Land Use Planning group (D-LUP), Provincial-Land Use Planning group (P-LUP), and support from the Department of Land Management and Urban Planning of the Ministry of Land Management, Urban Planning, and Construction. The purposes of CLUP are to manage and use natural resources sustainably, cut down land conflicts, support the development process of the socio-economy, contribute to poverty alleviation, and achieve communal land use planning according to the actual land use and potential existing natural resources. It also aims to reach the residents’ needs and

communal authorities to protect the current natural resource and create new ones, and be a part of managing the government land in the commune. funds and technical support from the public and private sectors are found to create a development plan and the commune's annual investment program. Therefore, the comprehensive direction of effective communal land use planning will assist the O’Krieng commune to sustain the natural resources and increase the equality for the communities in terms of land usage and the benefits of the development plan for everyone.

According to the report, most data is the secondary source collected from the commune and village chiefs. The CLUP team has collected information about the facilities, accessibilities, land ownerships, occupations, age, and migrations, as well as other related information, which is helpful to apply in the land use planning from the local authority. Primary data is also collected to update the existing information about the site. In this task, representatives of each village were invited to the meeting. Nevertheless, this report does not illustrate the level of public involvement, the stage to be involved, and which groups have been invited, in the process.

The report has included the demographic data of vulnerable groups such as indigenous people and a list of the critical land use development plans for the public facilities and future land management. However, the report has no evident participation from women, disabled people, religious minority and indigenous groups, and other vulnerable groups.

Consequently, it can be implied that there is limited public involvement in O’Krieng’s CLUP process. The absence of public engagement in the report shows that the public participation tools might not be explicitly used for the commune planning level from the local government's perception.

b. Implementation Manual on Commune Land Use Planning (known as Green Book)

The Green Book is an Implementation Manual on the CLUP process in Cambodia. It was prepared by the General Department of Land Management and Urban Planning with support from the Natural Resource Management and Livelihood Program (NRM&L) in 2009. The main objective of the manual is to support Commune Development Plan (CDP) and Commune Investment Program (CIP) and set up further land use options for all communes in Cambodia. According to the Green Book, the commune land-use plan refers to the strategic development plan for all land areas under the commune’s jurisdiction, including the private and public lands in the water, forest, and any land areas. The primary purposes of the CLUP process are preparing land use for biodiversity and natural resource conservation, supporting the fair and sustainable combination of social and economic values, cutting down poverty, increasing productivity, providing clear land-use identity,

preventing the adverse development on the land with natural resources, supporting the outcome with any needs, and getting supports from other stakeholders.

The book emphasized that the commune has one of main roles, which is to conserve and protect the biodiversity and natural resources. In accordance with the needs of the citizens, the implementation of the commune development plan for the whole process will enable the development to fulfill the actual demands for the community in the future.

The manual has classified the CLUP tasks into eight categories such as:

Task 1: Preparation – aim to *“prepare land use maps, Provincial ‘hot spot’ map for use by commune councils in CLUP/CDP/CIP process”*.

Task 2: Verification and update development objectives – aim *“to update detailed and simplified land use maps, to prepare a P/C/S maps to familiarize PBC and selected commune members with map interpretation”*

Task 3: Finalization of support maps – *“to assist in the analysis of results from the P/C/S assessments at village and commune levels, to provide a spatial overview of P/C/S results at commune level, to provide a basis for identification and spatial representation of the projects”*

Task 4: Assist in CIP project design – *“to select and design project proposals including land use planning requirements, to identify and select Commune Land Use Planning facilitators”*

Task 5: Prepare draft commune land use plan – *“to finalize maps and land use planning framework for consolidation and submission of CIP. Also prepare a draft land use plan for submission to commune council/DWG”*

Task 6: Support at District Integration Workshop – *“to support the commune representatives in preparation and during the presentations at the District Integration Workshop (DIW)”*

Task 7: Map finalization for CIP – *“consolidation of maps and information for presentation to commune council for final approval”*

Task 8: Monitoring and Evaluation CLUP – *“support the PBC in monitoring and evaluation of land use plan and other land-based projects. Updating databases/archive documents”*

According to the Green Book (p. 27), public participation is vital to be included in the CLUP process. The book mentioned that *“for all CLUP tasks, it is important that proper representation of women (at least through C/S Women’s and Children’s Focal Point, indigenous groups and other minority group are guaranteed to ensure that their perspective is present during the meetings of review and approval”*.

c. Sub-Degree No. 72 ANK.BR on Commune/Sangkat Land Use Planning Procedure, May 05, 2009

Sub-Degree No. 72 ANK.BR is a legal framework approved by the Minister Council in 2009, guiding the procedure of Commune/Sangkat Land Use Planning. According to the planning principle of the Sub-Degree, the participation from the civil society group who has the involvement in the land affair and local communities is needed for the commune land use planning. The concerned residents are allowed to participate in the communal assessment of the land use needs. In other words, the presence of public engagement for communal land use planning is needed from the planning principle as well as is crucial for the local government to hear from the local residents about land use planning relevant to the benefits of the community.

Proportional to the article 6 of Sub-decree mentioned that it is vital to have all stakeholders, especially local residents in the land-use planning process in the legal framework because they are the owner of the land and the direct users in the community. The collection of the information, consultation, and discussion with all stakeholders help the related authorities at the commune level to identify clearly the land-use demands, as well as the future needs of the community in preparing future strategic land-use planning.

d. Prakas/Declaration No. 115 BRK.MLMUPC on Procedure for budget proposal and uses for Commune/Sangkat Land Use Planning

Prakas No. 115 BRM.MLMUPC is an official legal framework, established by the MLMPC in 2011, in order to explain the Procedure for budget proposal and uses for Commune/Sangkat Land Use Planning in Cambodia. According to the Declaration No. 115 BRK.MLMUPC (2011), the budget for the communal land use planning in communal land use planning is the available fund for outreach activities and other related activities to support effective land use planning at the communal level. The outreach activities include training, workshop, or any promotional activities. However, the activities are more likely to approach the authorities and the related planning. The public, including the vulnerable groups and the indigenous people, does not seem to be emphasized in the budget uses for the CLUP process.

2.1. Instruments to promote public participation in CLUP planning

In this section, the research will introduce four principal instruments which were applied by many funded projects in Cambodia, mostly the projects supported by the World Bank.

a. Project outreach

The project outreach refers to the process of inclusively giving information about the commune's future development plan to all residents. Furthermore, the outreach activities will inform the communities about objectives, advantages and other related risks, such as gender-based violence and the project's grievance redress mechanisms (GRM). In addition, the outreach for the project implementation in terms of land use development plan at the commune level helps to give the full capability to the local citizens to understand clearly about the future development, as well as the current issues and solutions in their community. It also helps the locals to understand about zoning, regulations, and land use purposes and to provide compelling information about the land management within their neighborhood.

b. Stakeholder Engagement Plan (SEP)

In conformity with the MLMUPC and MAFF (2020) and GEF (2021), Stakeholder Engagement Plan (SEP) is a procedure of collecting the related individuals or parties to a whole plan in order to reduce conflicts or complaints during and after the development. It collects different data and performance of each particular for using as the collaboration to create the sustainable impacts of the project. While using the SEP in Cambodia, it is required to follow the related regulation due to the engagement of different stakeholders, including the general public, marginalized groups, private sectors, and the local and national levels of the governors.

c. Grievance Redress Mechanism (GRM)

According to MLMUPC and MAFF (2020), all related stakeholders have right to submit and access their grievances to the project implementers about their worries through the Grievance Redress Mechanism (GRM). The fundamental principles of designing the GRM engages with transparency, fairness, accessibility, effectiveness and confidentiality. Based on GEF (2021), a GRM refers to the process of allowing all related parties to the feedback and other relevant suggestions or grievance. A Grievance Redress Committee (GRC) is required at both national and sub-national levels. The mechanism and the GRC establishment must be publicly disclosed via published documents or websites. After the recording and generating of the feedback, the following process is to create the response and provide the answers to all stakeholders in the form of different communication and publication tools. The monitoring and evaluation will be the last process to achieve the proper function of the grievance redress mechanism. GRM is a valuable chance to collect the concerns from all stakeholders to find the best resolutions to solve the complaint in the planning process (MPWT and MRD, 2020). The duration of the grievance mechanism depends on the setting from the different authorities, as well as the scale of the complaints.

d. Project disclosure

Project disclosure refers to the process of disclosing information about the project and planning before the implementation to all stakeholders inclusively, according to MPWT and MRD (2020). The core principles for project disclosure are clear and precise information, fair and transparency, and accessible and useful information. The disclosure displays will include all components, such as environmental and social concerns, with the resolution for the potential risks.

2.2. IAP2 (International Association Public Participation) Spectrum


The research will use the IAP2 (International Association Public Participation) Spectrum for the participation rating and recommended tool. Social inclusion allows communities to participate in developing their living area (Nigel, 2012) (**Figure 1**). It is the freedom of citizens based on the democratic principle in a local area or community to identify problems and find solutions to improve their lives. Moreover, it motivates people to work together by providing a sense of community. All participants receive equality in their involvement by sharing social, traditional, cultural, and religious aspects and improving the city's development. As participation is the best approach for people to engage directly in the development of all places, all local councils have strategies and ways to interact with people (Peter, Sohrab & Bob 2002). Each city's social justice and sustainability are based on the public's participation because all sectors, such as healthcare, cultural, educational, political, and economic institutions, are linked closely with people (Jonh 1996). People's decision through public participation helps build a better community engagement process. It allows all stakeholders to be a part of what the community is having with the problems, including identifying risks, solutions, and opportunities in the actual situation. The result of the participation could lead to improve the community and local government framework by:

- Enhancing the service delivery and policy-making,
- Identifying the experience and habits of citizens,
- Strengthening the relationship of citizens with local governments,
- Doing feedback and evaluation more effectively with the local decision-making,
- Maintaining to make democratic decisions for all development approaches

The community engagement plan should have proper procedures to get all stakeholders to engage with specific forms (Department of Infrastructure, Local Government and Planning 2017). The community plan has been developed to complete the requirements of the area's development by the local governments in Queensland (Jim & the Queensland Department of Infrastructure and Planning 2009). While local governments play a crucial role in tackling all issues related to the citizens'

livelihood, people's perspectives about the improvement are the fundamental requirement that could lead to providing good living standards for people in the community.

Based on IAP2, the power of participation has five main components: inform, consult, involve, collaborate and empower.



	INFORM	CONSULT	INVOLVE	COLLABORATE	EMPOWER
PUBLIC PARTICIPATION GOAL	To provide the public with balanced and objective information to assist them in understanding the problems, alternatives and/or solutions.	To obtain public feedback on analysis, alternatives and/or decision.	To work directly with the public throughout the process to ensure that public issues and concerns are consistently understood and considered.	To partner with the public in each aspect of the decision including the development of alternatives and the identification of the preferred solution.	To place final decision-making in the hands of the public.
PROMISE TO THE PUBLIC	We will keep you informed.	We will keep you informed, listen to and acknowledge concerns and provide feedback on how public input influenced the decision.	We will work with you to ensure that your concerns and issues are directly reflected in the alternatives developed and provide feedback on how public input influenced the decision.	We will look to you for direct advice and innovation in formulating solutions and incorporate your advice and recommendations into the decisions to the maximum extent possible.	We will implement what you decide.
EXAMPLE TOOLS	<ul style="list-style-type: none"> • Fact sheets • Websites • Open houses 	<ul style="list-style-type: none"> • Public comment • Focus groups • Surveys • Public meetings 	<ul style="list-style-type: none"> • Workshops • Deliberate polling 	<ul style="list-style-type: none"> • Citizen Advisory committees • Consensus-building • Participatory decision-making 	<ul style="list-style-type: none"> • Citizen juries • Ballots • Delegated decisions

Figure 1: International Association of Public Participation Spectrum (IAP2 2011)

The International Association of Public Participation Spectrum will be used as the rating tool to identify the level of public participation in the result’s discussion part. From the lower participation, “Inform,” to the highest level of involvement “Empower”, this research outcome will analyze the possible level of public participation from residents in the O’Krieng commune. Hence, the widespread impact of the land-use planning in the O’Krieng commune will get the participation rate as “Low, Medium or High”. Then the selected tool for the research outreach will be determined as fit with CLUP, especially in O’Krieng commune, to promote social inclusion.

Chapter 3: Methodology

In this chapter, the study will illustrate the most comprehensive methods to answer the three main research questions. It will start with an explanation of how qualitative and quantitative methods were used to apply in the study, along with the questionnaires (**Appendix 1,2,3 and 4**) and Consent Form (**Appendix 5**). Following this, the choice of O’Krieng selection will be discussed. Last but not least, the expected limitation due to unpredictable events will be analyzed, and a mitigation plan will be prepared to avoid struggles during the study.

Qualitative and quantitative research methods will be used for conducting and collecting data for the entire research process. Firstly, the qualitative method will help to collect verbal information within the focus group. The responses from the questionnaires will allow the study to answer the question substantially and empirically. The verbal conversation helps people express their feelings or thoughts more effectively and assist uneducated people to inclusively participate in the entire process of the research by giving speeches about what they want to have in their local land use planning. Secondly, the quantitative method will help to collect data, such as the numbers from the designed questionnaires. This method will help to collect fundamental data for better analysis. The answers from the research participants will be delivered in the right direction by the research team. Hearing the voice of the public, particularly the vulnerable groups, will serve as a crucial element in promoting public participation, leading to an effective CLUP for sustainable community development. While Cambodia has insufficient academic research and related articles on public participation in the CLUP process, these two methods will help to collect data efficiently from any context of participation, especially from vulnerable groups. The researchers and interviewers will learn and adapt themselves in all processes to collect data from all stakeholders with the proper ethical standard (discreetness, openness and nonjudgement) in both personal and cultural awareness.

The research team selects O’Krieng commune as a case study because the timeframe of the CLUP in this site can illustrate the level of participation in the entire project. The plan started in 2009 and aimed to end in 2022. Additionally, this commune has all key public stakeholders, such as indigenous and marginalized groups. The commune is accessible and reachable along National Road No. 7, as shown in **Figure 2**. The map is produced by using spatial data from the ArcGIS program, which allows us to visualize the accessibility of the research’s target location and risk analysis to aid researchers in the successful implementation of the research.

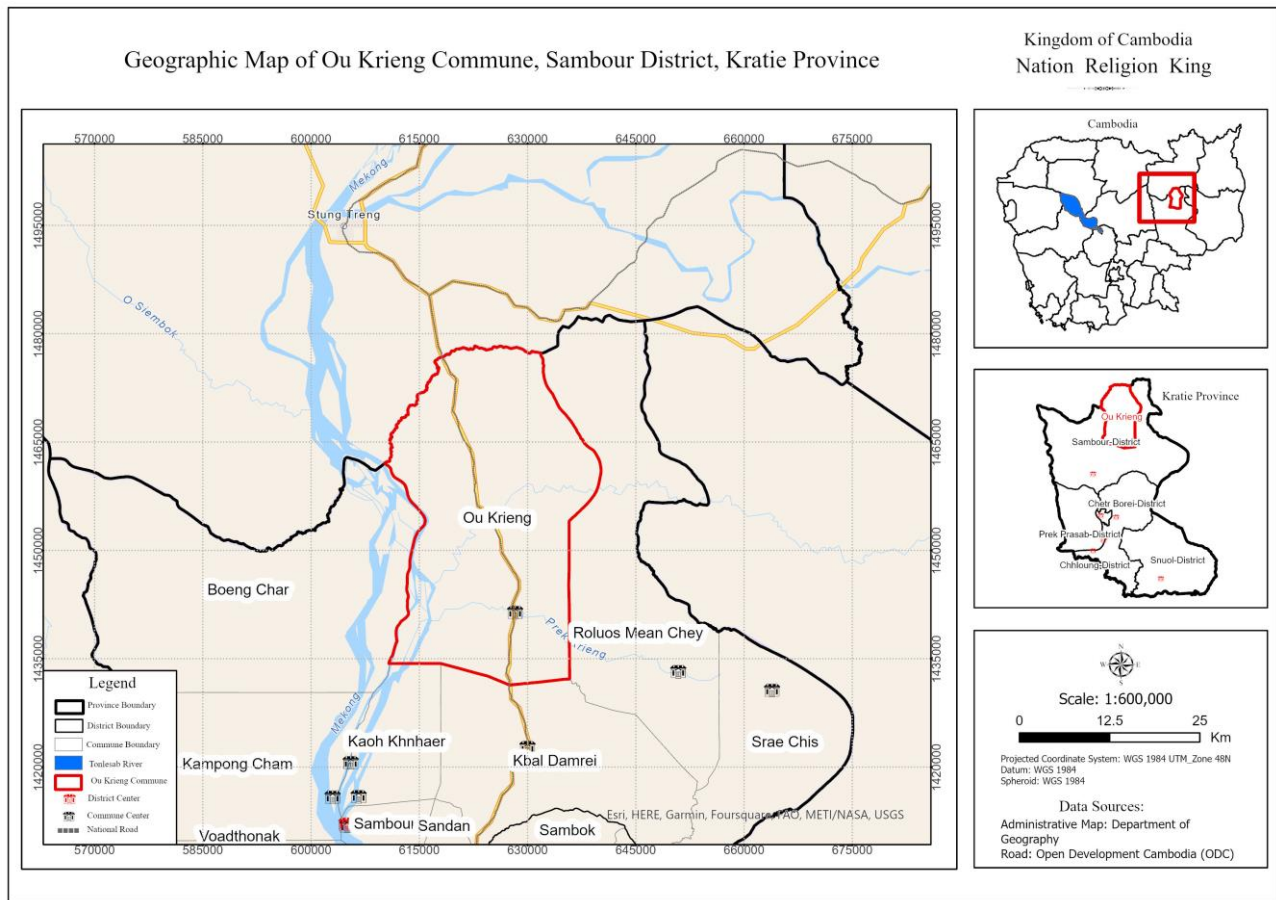


Figure 2: A Geographic map of O’Krieng Commune in Kratie Province

In this commune, the research team has an established network from the governmental agency and diverse demography, which are eligible for our research study. Our target villages are Koh Knhae, Ksach Leav, O’Kok, O’Krieng, and Koh Ponchea. These five villages broadly consist of all targeted stakeholders for the research topic.

For the targeted population in the household interview, selected samples were derived from a stratified sampling method since the research aims to compare the level of participation among marginalized groups and the general public. The research will interview 112 people, classified into four main categories, such as G1 (CLUP experts), G2 (local authorities), G3 (general public), and G4 (vulnerable groups), as explained below:

- G1 consists of five CLUP experts, including a director of the Department of Land Use Planning¹, two deputy directors of the Department of Land Use Planning, and two chief officers of the Department of Land Use Planning. They are experienced in data collection

¹ At the national level, CLUP is led by the Department of Land Use Planning, which is under the supervision of MLMUP.

and GIS. They all work at the Ministry of Land Management, Urban Planning, and Construction (MLMUPC).

- G2 consists of 10 local authorities, such as a commune chief of O'Krieng commune, two deputy chiefs of O'Krieng commune, two clerks of O'Krieng commune, two village chiefs in the O'Krieng commune, an official of Forestry Administration, and two officials from the Provincial Department of Land Management, Urban Planning, Construction, and Cadastre (PDLMUPCC)².
- G3 consists of 20 residents from O'Krieng village, 20 residents from O'Kok village, 15 residents from Koh Knher village, 15 residents from Koh Punchea village, and 15 residents from Ksach Leav village. There are 85 people in total.
- G4 comprises 12 vulnerable people, including two poor people³, two indigenous people, two minority people (Cham), two elderly people, two widows with many children, and two disabled people. This group is the target for the focus group discussion.

The 100 samples for quantitative and 12 for qualitative research could allow us to perform statistical power in statistical tools in an effective way. Therefore, they will be randomly selected based on their group.

The survey with the government officers in G1 and G2 was conducted face-to-face as Covid-19 situation is not seriously spread in the site. In addition, face-to-face interviews with residents from different backgrounds of random participants in G3 of O'Krieng commune will be used for our data collection. The interview process was commenced by visiting the potential households in the selected villages. It allows the researchers to deeply understand the local community's knowledge and perspective on the importance of participating in the communal land use planning process. The focus group discussion with G4 allowed various groups of marginalized people a chance to share their perceptions, concerns and solutions on the commune land use planning process. The discussion was held at the community center. Focus group discussion with G4 was open a space for vulnerable groups to provide their answers wisely and confidently. It took only one day to gather most of our target people in G4.

In addition to the data collection from G3 and G4, face-to-face interviews using questionnaires to collect household data was used. This methodology is cost-effective and convenient in Cambodia because some local communities are limited technology literacy. Hence, using email or electronic questionnaires was not work for people who live in remote areas. Face-to-face questionnaires allow

² At the provincial level, the PDLMUPCC is a team leader in the CLUP process. It is under the supervision of MLMUPC.

³ In Cambodia, the poor group is defined by IDPoor with two levels, including IDPoor 1 for the extremely Poor, and IDPoor 2 for the general poor. Source: <https://idpoor.gov.kh/>

interviewers to interact with interviewees directly, ask them questions, write their responses and record their interview session for validating and transcribing for the analysis.

To adhere to Covid-safe protocol, masks was provided and worn all the time. The interview follows the social-distancing guidance of the Ministry of Public Health of Cambodia. Moreover, only vaccinated people was selected, and sanitizer and standard thermometer was used all the time.

Expected Limitations

With a small sample size, caution must be applied, as the findings might not be transferable to the overall context of the locals in O’Krieng commune. Moreover, the results of the data from the G3 and G4 did not cover all aspects of the interview due to the limited time of the interview, the COVID-19 pandemic, the ability to understand and give acceptable responses from residents who are ageing and have a low educational background in the remote areas. The financial resources for this interview was also the other constraint due to this interview needing a lot of time and interaction with different stakeholders to produce high-quality research data.

Therefore, a further study focusing on public participation from the local community regarding the four instruments is suggested. The study should focus on the characteristics, case studies and technical approaches which O’Krieng commune could deliver to the public to achieve sustainable community planning. While there is a lack of resources for public participation in the CLUP process, future funds and support from the government agency and related institutions from INGOs for the training and capacity building of the responsible team in O’Krieng commune also need to discuss in the future research and plan.

Chapter 4: Findings

This chapter will discuss the findings of the study based on the analysis of the interviewees' responses in order to answer the three proposed research questions. It will discuss the level of public participation in the actual practice of the CLUP process as a case study of O'Krieng commune. Following this, the reason why public participation is limited in the planning process and some suggestions from the interviewees to promote higher involvement in CLUP will be explained. Then, the adverse impacts due to the limited involvement of the public will be analyzed according to the interview. The discussion will be based on the interview with 112 participants, including 5 CLUP experts currently working at the MLMUPC, 10 O'Krieng commune authorities, 85 general residents of O'Krieng commune, and 12 vulnerable people in the commune. Lastly, the suggested solutions from the interviewees will also be discussed. Some recommendations from the additional resources, including the internationally published research as well as the official reports from the neighboring countries concerning public participation in planning, will also be provided in this last section.

4.1. The level of public involvement in the CLUP process, in O'Krieng commune

The combination of these findings supports the conceptual premise that the level of public participation in the CLUP process of O'Krieng Commune is significantly low. The majority of both the general public and vulnerable groups are unlikely to be invited to the process of CLUP at practically all stages. Only the representatives and village chiefs are invited. Based on the survey, 100% of the G1 acknowledged the CLUP process before, while only 60% of G2 had heard about CLUP before as they are new members of the Commune Council. Additionally, among the 97 interviewees (G3 and G4), only approximately 30% have heard about CLUP planning but were not invited to the CLUP process (**Figure 3**).

Public participation level by Tasks⁴

Regarding the level of public participation, Task 2 on "Verification and update development objectives" seems to involve the public the most, according to the survey (**Figure 4**). Approximately 40% of the G1 mentioned that the public had been involved in almost all Tasks of the CLUP process, except Task 3 and 4, while only 10% of G2 and G3 claimed that the public has participated in almost all tasks. The data differences might be caused by the level of actual practice

⁴ Explained in 2.1 - b

at the ground level with different stakeholders. Moreover, among the focus group (G4), everyone claimed that they had never participated in the CLUP process before due to the lack of information.

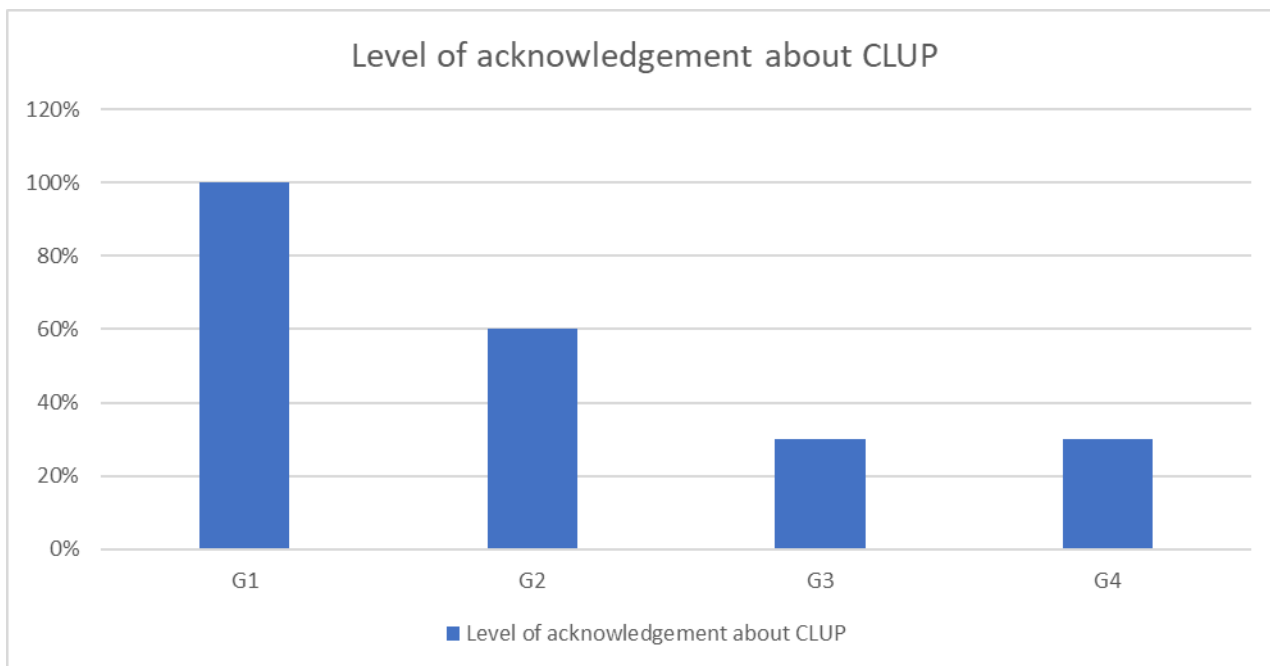


Figure 3 Level of CLUP acknowledgement

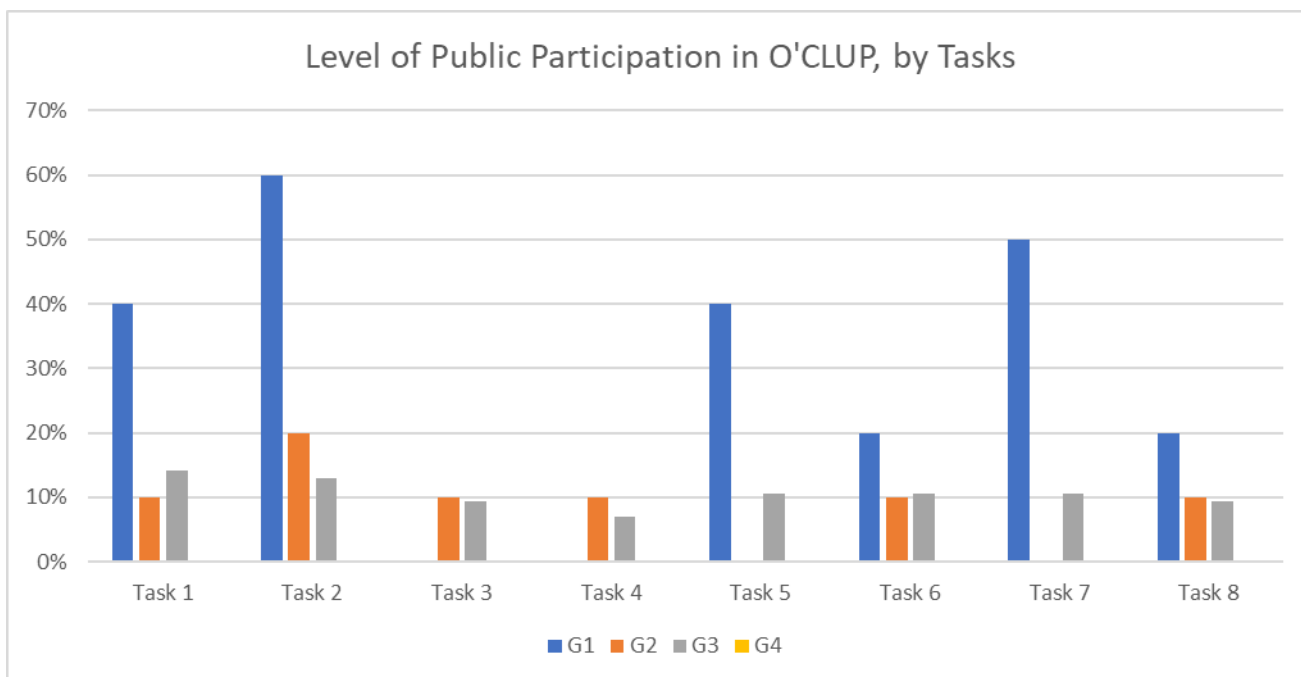


Figure 4 Level of Public Participation in O'CLUP, by Tasks

Based on the CLUP expert (G1), only certain stages are typically open to the public. They added that Task 2 is the most critical activity, which requires the public to be involved because only the direct users know the particular situation of their commune. Following this, phases 1, 5, and 7 are essential for the public display. The CLUP experts claimed that Task 6 and 8 are slightly crucial for

the participants as it needs a higher level of understanding of the technical terms in the land-use planning process because the public are unlikely to express their opinion during this process which will be a waste of money and time for the host and participants.

Essential stakeholders for CLUP process

According to the G1 and G2 responses, authorities, national NGOs, and the general public are essential entities to involve in CLUP planning. Noticeably, the G1 claimed that among the general public, only the representative of the general public usually appears in the meeting. It is due to the unclear stakeholder engagement plan and poor information being transferred from the planners to the village chiefs, according to G1. G1 added that specific cohorts, such as vulnerable groups, including disabled/aged, IPs, minorities, widows with many children, low-income group, and the LGBT community, has not been classified in CLUP. As a result, diverse groups are unlikely to involve in planning.

To promote more effective CLUP process, G2 mentioned that all stakeholders, including the vulnerable groups, should be invited to the planning, especially phases 1,2,3 and 8. G3 and G4 agreed and mentioned that they are passionate about being a part of the CLUP process as it is vital for the living of their next generation. Furthermore, the three groups added that public participation in CLUP is beneficial for sustainable community planning because it can navigate the practical planning purposes, reduce during/post CLUP implementation, and provide considerable benefits to the residents. For example, the residents can sell their land at a high price when they acknowledge development in their neighbor.

Although the public has been invited in some tasks, the level of participation is still limited in the actual practice based on the interview due to five primary reasons as explained in the following section 4.2.

4.2. Reasons of the Lack of Public Participation

The most striking result to emerge from the data is that there are five significant reasons from the different studied groups for the lack of public participation in the CLUP process. These five reasons include low interest within the local public in the CLUP process, time-consuming, limited transferrable information to residents, the lack of facilities or tools for the gathering, and poor design approaches for the illiterate and vulnerable groups.

First of all, the interest of the residents in CLUP planning is substantially limited. Based on the CLUP experts (G1) and the local authorities (G2), the limited interest in the CLUP process is due to the fact that the general public is not much interested in the project as they do not have a

background in this field of land-use planning and management. According to the village chiefs, the general public is unwilling to attend the meeting as they do not understand the process of CLUP. They added that the planning should be prepared by experts who have the sufficient capability in both knowledge and experience.

Secondly, time-consuming is also a reason for the lack of public participation in the CLUP process. G1 mentioned that the more people in the decision, the more time the planning requires. They added that the participants, especially the general public, tend to discuss unrelated topics, which might delay the discussion. G3 and G4 agreed and mentioned that most meetings spend almost the entire day, which tend to interrupt their working time and income.

Thirdly, the information transferred to the residents is significantly limited within the commune. According to G3 and G4, the information about planning needs to be more effectively communicated. They claimed that there were no outreach activities prior to the CLUP process. Consequently, most of them do not receive the information about CLUP implementation. The G1 and G2 claimed that the information is usually transferred to the village chiefs and the representative only, and then the information will be shared later with their village members. As a result, only village chiefs and representative are more likely to involve in the planning process.

Fourthly, the lack of facilities is also a cause to distract the residents from involving in the commune planning. G3 and G4 said that the distance is a considerable concern for them to attend in any communal events. They mentioned that the meeting is typically held at the commune hall, far from their houses. They requested that several meetings at different locations, especially those closer to their villages, be a better option for them to attend the meeting because most of them have no vehicles and mostly live far from main roads. Travel allowance is also an option to promote public participation in CLUP planning, according to the villagers from both G3 and G4. They said they also aim to know about the development process but they need more budget to travel from their houses to the meeting halls.

Lastly, the design of the CLUP process is another main reason for limiting public participation in the process. G1 added that the different cohorts of stakeholders, exceptionally diverse groups of vulnerable groups, need to be clearly defined in CLUP and invited accordingly; otherwise, only the representatives of the community, who are educated and have power in the community will be invited. Additionally, the terms used in the planning and during the commune meeting are too complicated and technical for the local participants. These hard-to-understand terms and discussions might discourage the residents, in particular the illiterate groups, from being involved in the meeting.

4.3. Adverse impacts of limited public involvement in CLUP

As defined in chapter one, CLUP is the commune planning that aims to promote sustainable development and to use the limited resource in the commune effectively and comprehensively. Although the planners specialize in planning, the local residents within the community are required in the planning process as they are the final users and, consequently, the beneficiaries or victims of all development in the commune. Henceforth, the absence of planning will cause many adverse impacts on the future development of the commune and significant impacts on the local residents. Based on the interview, all interviewees agreed that public participation is essential for sustainable CLUP and future commune planning. The responses from the interviewees show that insufficiency of public participation might cause three significant adverse impacts, as discussed below.

This finding suggests that the low level of public participation might minimize the effectiveness of the planning. The project might be inviable as the data is from somewhere other than the current residents. The most updated data from the residents are more likely to be the most reliable source as they are the actual users in their neighborhood. The indigenous group is the best example to illustrate that effective planning needs the participation of the indigenous people as direct users. While they aim to protect their culture and tradition, planning without listening to their concerns will cause chaos for indigenous groups and the entire planning process.

In addition, this result may be explained by the fact that the limited public participation in planning will increase the chance of conflict during and after the process. 72 among 85 interviewees in G3 and G4 mentioned that the residents might lose benefits and encounter conflicts due to the lack of public participation and information about the land-use planning process in their local commune. Acknowledging the planning process in their local neighborhood can help the local residents identify the problems of their land ownership or the future development of their residential zoning. Hence, they can think ahead, contribute their idea to the local authorities, and raise their concerns regarding specific challenges.

Likewise, the limited and inconsistent involvement, especially at the beginning of the planning, makes the local residents lose their benefits as they do not know about the future projects which will happen in their local community. All interviewees in G4 and about 85% of G3 mentioned that by encouraging social inclusion, the project would reserve profit for the local residents. The residents have prominent roles in receiving the update of future development of the local neighborhood regarding the future land-use planning of public buildings, infrastructure, public roads, forest protection, floodplain management, and related development, which will impact their livelihood. Without the information on the future development, the locals might lose the

opportunity to grow their business, give feedback on their personal interest in the project development, ask for explanation or critical support from the developers about the direct advantages of the development to the communities, and foresee the future of their household, especially for the younger generations.

4.4. Solutions and recommendations

4.4.1. Suggested solutions from the local residents

In distinction, this combination of findings provides some support for the conceptual premise that there are five solutions for creating better communication within the CLUP process at the local level.

First of all, it is indispensable to increase awareness about the planning among the local residents. According to G1 and G2, the first step of the CLUP process is beneficial to provide more understanding about the planning to the locals. The process of CLUP and its benefits should be heard and clearly understood by the residents with limited education and lack of experience in the local land-use planning process. The locals need to perceive precisely about disseminating public participation's benefits. Thus, they would learn about the significant impacts on their future community land-use development.

Additionally, the easy-to-understand presentation, such as an illustration of the influential local marketing plan and law enforcement, is also substantial to attract the residents to participate in planning. Since the level of education is diverse in different households, the deliverables of the CLUP process need to be simplified to fit with the local knowledge and interest and arranged especially for elderly and disabled people.

Another solution is to have minimal time and comprehensive time selection in planning. The most significant factor to consider is time consumption and time selection to encourage more involvement in CLUP planning or other commune development planning. While the residents have different jobs, such as farming, they are usually busy in the morning slot. Therefore, it is crucial to find a suitable meeting time accessible to all residents. From all interviewees, the lunch break or afternoon is the best time for conducting the meeting.

Furthermore, traditional communication tools are the correct choice for communicating with residents in remote areas. Through phone calls, speakers, and face-to-face information within the nearby local community, local residents can get information on the CLUP process at the right time. This method helps not only the local authorities to collect people effectively but also helps the vulnerable group to have direct engagement with the local leaders.

Last but not least, the venue for the meeting or discussion events should be considered. The residents (G3 and G4) mentioned that it is essential to facilitate the meeting and travelling support by offering some budget for their travel costs or moving the events closer to their houses. The authority agreed and mentioned that the further the distance of the meeting from their houses, the less public involvement in most planning in O’Krieng commune because almost a quarter of their residents live far from the roads.

4.4.2. Recommended solutions

Adding to the above suggested solutions from the interview, the empirical studies by many researchers have also introduced many solutions to promote social inclusion in planning. Hence, the research will introduce four principal methodologies to encourage public participation. The solutions are the most suitable to the Cambodian context as it has already been applied and completed in many projects in Cambodia and the neighboring countries. These include the project outreach, Stakeholder Engagement Plan (SEP), Grievance Redress Mechanism (GRM), and project disclosure.

These four instruments have been introduced to the interviewees as well as the survey. A majority of G1 have heard of the above instrument, but they are not really put into practice in the actual practice of CLUP. The residents of G3 and G4 tend to hear about outreach and public disclosure, but very little has heard about SEP and GRM. Project outreach and public disclosure are generally done on a small scale within the villages or communities—for example, the village events or direct information from the village chiefs /representatives to the villagers. Hence, to promote the effectiveness of the four instruments, the IAP2 spectrum (discussed in section 2.3 on IAP2) should also be considered in the planning as it could guide the most comprehensive communication approach to the planning.

a. Project Outreach

As explain above, the project outreach slightly appeared in the CLUP process. Project outreach is spread to specific targeted groups only, particularly the representative of the villages. Therefore, to implement an effective project outreach, the advertising tools should be more innovative and inclusive for everyone, especially for vulnerable groups. The outreach should be in the form of an easy-to-understand brochures, local radio, or public microphone to announce the project purpose. Community meeting, a traditional reunion, is still an effective method to transfer the objective of the project, CLUP to be specific, to the residents prior to planning.

b. Stakeholder Engagement Plan (SEP)

As reviewed in Chapter 2, SEP has been identified as a process to engage all stakeholders in the land-use planning process. However, the stakeholders, such as local residents, still need to be fully listed in the CLUP process. Without the public residents' involvement in the SEP analysis, the development is not entirely on the right track. In addition, residents are harder heard more about SEP before, which means that the local residents need to learn about their prominent role as stakeholders in the CLUP process. Thus, SEP should be featured for the locals to create inclusive land-use planning.

c. Grievance Redress Mechanism (GRM)

The grievance Redress Mechanism (GRM) can resolve any activities related to complaints or disputes in land-use planning for the CLUP process. It is vital to fully function all the grievance processes to give transparency and fairness to the residents. Corresponding to the interview, GRM is not featured to the residents, which means that the public in O'Krieng is not fully aware of the legal process of the complaint or disputes regarding any conflict or disadvantages for their property. Limited fundamental knowledge about GRM from the locals will create inconsistent development and generate a lot of chaos in the future.

d. Project Disclosure

According to the interview, project disclosure is a familiar process for O'Krieng residents as they have experienced with public display in the land titling process. However, the residents (G3 and G4) mentioned that they had never heard of CLUP's disclosure before. G2 agreed and added that CLUP has never been officially disclosed at both the national and sub-national levels. The study suggests that project disclosure, such as public display, printed documents or published reports online, is a fundamental tool to promote project effectiveness because it allows the residents to understand the agreed plan for the commune land use planning. Furthermore, the disclosed documents will allow all stakeholders to monitor and track the work of the authorities or planners to develop their community based on the approved plan.

Despite the different levels of understanding about the four instruments above, all groups agreed that the instruments are necessary to all commune development, including the CLUP process, because they can promote more understanding about CLUP and gives benefits to all residents if they know the process.

Chapter Five: Conclusion

This research identified that the level of public participation for the CLUP process in O’Krieng commune is remarkably low. The CLUP process is not well planned for the public. The lack of public participation of the local residents for the land-use planning provides negative impacts on the socio-economic of the local residents. It also delivered the lack of transparency, livability, and cultural perceptions of the land owners for the future sustainable land management and development in O’Krieng. Moreover, the local communities have lost benefits from the development regarding not able to hear and give feedback about their land use’s demands and the project implementation related to land-use planning. In order to solve the issues of lack of public participation, the local communities have raised their solutions to support their participation in the land-use planning process such as strengthening the awareness about the planning purpose to the resident, improve invitation and communication strategies with the local communities in all relevant meeting, provide better venue options, minimal time, and giving the better outreach for the whole process of the commune land-use planning. The feature of the four instruments such as Project Outreach, Stakeholder Engagement Plan, Grievance Redress Mechanism and Project Disclosure is also a good example of linkage these solutions from the local perception to the technical resolutions.

References

1. Bandaiko, E 2018, *Stakeholder Participation in Land-Use Planning Processes: An Assessment of London's Official Plan Review Process- 'Rethink London' Using the Collaborative Planning Framework*, <https://ir.lib.uwo.ca/lgp-mrps/176/>. viewed September 5, 2022, <<https://ir.lib.uwo.ca/cgi/viewcontent.cgi?article=1175&context=lgp-mrps>>.
2. Committee of Planning and Budget Management 2009, *Commune Land Use Planning in O'Krieng Commune*.
3. Department of Infrastructure, Local Government and Planning 2017, *Draft community engagement toolkit for planning*, viewed 20 September 2022, <<http://www.betterplanning.qld.gov.au/resources/planning/better-planning/draft-community-engagement-toolkit.pdf>>.
4. General Department of Land Management 2016, *Introduction to the Cambodian Spatial Planning System: Spatial Planning Series No. 1*, Ministry of Land Management, Urban Planning and Construction.
5. General Department of Land Management 2016, *District & Municipal Land Use Master Plan and Land Use Plan Handbook: Spatial Planning Series No. 3*, Ministry of Land Management, Urban Planning and Construction.
6. General Department of Land Management and Urban Planning 2009, *Implementation Manual on Commune Land Use Planning*, Ministry of Land Management, Urban Planning and Construction.
7. Global Environmental Facility 2021, *Stakeholder Engagement Plan*. GEF, viewed September 16, 2022, <<https://e2c5u3w6.stackpathcdn.com/wp-content/uploads/2021/01/Stakeholder-Engagement-Plan.pdf>>.
8. Holmes, B 2014, *Citizens' engagement in policymaking and the design of public services*, Home – Parliament of Australia. viewed 11 August 2022, <https://www.aph.gov.au/about_parliament/parliamentary_departments/parliamentary_library/pubs/rp/rp1112/12rp01>.
9. International Association of Public Participation Spectrum 2011, *IAP2*, viewed 3 August 2022, <https://www2.fgcu.edu/Provost/files/IAP_Public_Participation_Spectrum.pdf>.
10. Jim, C & the Queensland Department of Infrastructure and Planning, 2009, *Queensland Local Government Community Services Association: Community Planning Toolkit, Queensland*, viewed 3 August 2022, <<http://www.lgmaqlld.org.au/Portals/0/Pdfs%20and%20Docs/Villages/QLGCSA%20Community%20Planning%20Toolkit.pdf>>.
11. Jonh, A 1996, *Sharing City: Public Participation in Urban Management, UK & US*.
12. Ministry of Land Management, Urban Planning, and Construction 2014, Decision Letter, No. 041, on “Detailed Procedure of Commune Land Use Planning”.
13. Ministry of Land Management Urban Planning and Construction, Ministry of Finance and Ministry of Interior of Cambodia 2011, Declaration No. 115 BRK.MLMUPC on *Procedure for budget proposal and uses for Commune/Sangkat Land Use Planning*.

14. Ministry of Land Management Urban Planning and Construction and Ministry of Agriculture, Forestry, and Fisheries (MLMUPC and MAFF) 2022. *Stakeholder Engagement Plan (SEP)*. Phnom Penh: MLMUPC, viewed August 23, 2022, <https://docs.google.com/a/servingweb.com/viewer?url=http://mlmupc.gov.kh/items/LA-SED%20III_SEP.pdf>.
15. MLMUPC 2020. *Environmental and Social Management Framework*. Phnom Penh: MLMUPC. Retrieved from https://docs.google.com/a/servingweb.com/viewer?url=http://mlmupc.gov.kh/items/20201203%20Approval_ESMF_Oct_08_2020.pdf
16. MLMUPC 2022. *Annual Report 2021*. Phnom Penh: MLMUPC. Retrieved from [https://docs.google.com/a/servingweb.com/viewer?url=http://mlmupc.gov.kh/items/12.2%20Report%20yearly%202021%20\(C\).pdf](https://docs.google.com/a/servingweb.com/viewer?url=http://mlmupc.gov.kh/items/12.2%20Report%20yearly%202021%20(C).pdf)
17. Ministry of Public Works and Transport and Ministry of Rural Development (MPWT and MRD) 2020, *Stakeholder Engagement Plan*. Phnom Penh: MPWT and MRD. Viewed September 28, 2022, <<https://documents1.worldbank.org/curated/en/397031586230420580/pdf/Stakeholder-Engagement-Plan-SEP-Cambodia-Road-Connectivity-Improvement-P169930.pdf>>.
18. Nigel, C 2012, *Community Participation in Spatial Planning: Exploring Relationship between Professional and Lay Stakeholders*, Local Government Studies, vol. 38, no 3, p. 345-366.
19. Peter, H Sohrab, B & Bob, R 2002, *Emergency Sanitation: Assessment and Program Design*, Loughborough University, UK, pp. 177-183.
20. Royal Government of Cambodia 2009, *Sub-Degree No. 72 ANK.BR on Commune/Sangkat Land Use Planning Procedure*.
21. Royal Government of Cambodia 2018, *Cambodian Sustainable Development Goals (CSDGs) Framework (2016-2030)*.

Appendix 1: Questionnaire for CLUP experts

Interviewee			Phone Number	
Position			Email	
Interviewer			Date	

Purpose of the research:

- To deeply understand the level of social inclusion in the CLUP process
- To be aware of the limitation of diversity in the CLUP process and its issues

Question:

A. General information

1. When was CLUP established?
2. By which ministries/institutions were CLUP established?
.....
3. Which ministries/institutions are involved in the CLUP process?
.....
4. How long do you work in CLUP?
 less than 5 years 5-10 years more than 10 years
5. What is your responsibility in the CLUP process?
.....
6. Is there any revision/improvement in CLUP process?
 Yes No (jump to No. 8) Not sure (jump to No. 8)
7. If “Yes”, what is the revision?
.....

B. Public Participation in CLUP process

8. During CLUP process, is the general public invited?
 Yes No (jump to No. 12)
9. Are all groups of the general public, including the vulnerable groups, invited?
 all groups certain groups (jump to No. 12)
10. Why are the general public invited in CLUP process?
 to follow the CLUP procedure
 to obtain site-specific information from the local residents
 to eliminate conflict in pre/during/post CLUP implementation
 others:

11. Why are certain groups not invited to the process?

- select only a few representatives that do not have a connection with the government
- select only a few representatives that have a connection with the government
- only community/village representatives that understand the actual issues and needs of the general public
- more time consumption with more participants
- more budget expenses with more
- others:

12. Based on your opinions, why do the general public not participate in CLUP process?

- they think that their opinions are not important
- they think that they have limited knowledge of the CLUP process
- personal busyness
- the lack of information about the CLUP process from the authorities
- others:

13. What step is the general public mostly invited?

- Task 1: Preparation of Land Use Map
- Task 2: Verification and update development objectives
- Task 3: Finalization of support maps
- Task 4: Assist in Commune Investment Program project design
- Task 5: Prepare draft commune land use plan
- Task 6: Support at District Integration Workshop
- Task 7: Map finalization for Commune Investment Program
- Task 8: M&E Commune Land Use Plan

14. Which stakeholders are usually invited in CLUP process?

Stakeholders:

- | | | |
|---|---|---|
| <input type="checkbox"/> Local residents | <input type="checkbox"/> Local NGOs | <input type="checkbox"/> International NGOs |
| <input type="checkbox"/> Civil Societies | <input type="checkbox"/> Public authority | <input type="checkbox"/> Elderly/Disable |
| <input type="checkbox"/> IPs | <input type="checkbox"/> Minority | <input type="checkbox"/> Private company |
| <input type="checkbox"/> Women with many children | <input type="checkbox"/> Low-income group | <input type="checkbox"/> LGBT |

15. To what extent, is the public, including particularly vulnerable groups and IP, involved in CLUP?

Participants	Level of Participation			
General public	<input type="checkbox"/> No	<input type="checkbox"/> Low	<input type="checkbox"/> Moderate	<input type="checkbox"/> High
Elderly/Disable	<input type="checkbox"/> No	<input type="checkbox"/> Low	<input type="checkbox"/> Moderate	<input type="checkbox"/> High
IPs	<input type="checkbox"/> No	<input type="checkbox"/> Low	<input type="checkbox"/> Moderate	<input type="checkbox"/> High
Women	<input type="checkbox"/> No	<input type="checkbox"/> Low	<input type="checkbox"/> Moderate	<input type="checkbox"/> High
Low income group	<input type="checkbox"/> No	<input type="checkbox"/> Low	<input type="checkbox"/> Moderate	<input type="checkbox"/> High
LGBT group	<input type="checkbox"/> No	<input type="checkbox"/> Low	<input type="checkbox"/> Moderate	<input type="checkbox"/> High

16. Why are some groups not invited?

- level of education level of interest personal profit
- political conflict religious conflict men domination
- Others:

17. Why are some groups unlikely to involve in the discussion?

- time consumption level of education
- gender-biased concept lack of information on CLUP
- Others:

18. Do you think that the public participation of CLUP from everyone inclusively is important to the development of the community?

- Yes No Maybe

19. What are the adverse impacts of limited public participation of CLUP on the sustainable development of the community?

- conflicts during/post CLUP implementation
- CLUP planning is not put in real practice

- CLUP planning does not meet the actual needs of the residents
- Benefit loss for the residents (i.e., the residents do not know about the development project and then sell their properties in low price)
- others:

20. Have you ever heard of “project outreach activities”, “Public disclosure”, “Stakeholder Engagement Plan”, and “Grievance Redress Mechanism”,?

Definition:

Project outreach: refers to the public outreach to the general public living in the target commune about the purpose of CLUP via public events, brochures, short videos, or other types of announcements before the project implementation.

- Yes No Maybe

Based on your opinions, is **Project Outreach** important in the CLUP process?

- Low Moderate High

Project disclosure: refers to the public display of the result obtained from the CLUP discussion to all stakeholders, especially the affected people due to the project.

- Yes No Maybe

Based on your opinions, is **Project disclosure** necessary in the CLUP process?

- Low Moderate High

Stakeholder Engagement Plan: refers to the plan that encourages all stakeholders to involve in related activities in the CLUP process to receive information about the plan and to raise their voices about the issues and solutions occurring in the pre/during/post project preparation.

- Yes No Maybe

Based on your opinions, is **Stakeholder Engagement Plan** necessary in the CLUP process?

- Low Moderate High

Grievance Redress Mechanism: refers to the mechanism to address all related grievances by all stakeholders affected by the project. The affected groups are capable of requesting any solutions/responses from the project workers if they think that the project could negatively affect to their livelihood or their existing benefits.

- Yes
- No
- Maybe

Based on your opinions, is **Grievance Redress Mechanism** necessary in the CLUP process?

- Low
- Moderate
- High

21. Is focus group discussion used in the CLUP process?

- Yes
- No
- Sometimes: reason

22. If focus group discussion is used, how effective is it?

- Low
- Moderate
- High

23. Based on your opinion, how can we improve social inclusion in CLUP process?

.....

.....

.....

.....

.....

.....

.....

.....

.....

.....

Appendix 2: Questionnaire for Local Authorities in O’Krieng commune

Interviewee			Phone Number	
Position			Email	
Interviewer			Date	

Purpose of the research:

- To deeply understand the level of social inclusion in CLUP process
- To be aware of the limitation of diversity in CLUP process and its issues

Questions:

A. General information

1. How long have you been living in O’Krieng commune?

- less than 5 years 5-10 years more than 10 years

2. How long have you been working in this position?

- less than 5 years 5-10 years more than 10 years

3. Are there any Commune Development Plan in O’Krieng commune?

- Yes No

4. If “YES”, what are they?

- Budgeting Plan
- Physical Infrastructure Plan
- Social Infrastructure Plan
- Others:

5. From which budgeting resource does the Commune Development Plan receive?

- Government Private Company Political party in the commune/district
- National/International NGOs Residents PPP
- Others:

6. Do residents participate in Commune Development Plan?

- Yes No Maybe

B. Public Participation in CLUP process

7. Have you ever heard of CLUP?

- Yes No Maybe

8. Are you allowed to attend the CLUP process?

- Yes No Maybe

9. In O’CLUP 2009, was you invited to the process?

- Yes No Maybe

If “Yes”, in which stage:

- Task 1: Preparation of Land Use Map
- Task 2: Verification and update development objectives
- Task 3: Finalization of support maps
- Task 4: Assist in Commune Investment Program project design
- Task 5: Prepare draft commune land use plan
- Task 6: Support at District Integration Workshop
- Task 7: Map finalization for Commune Investment Program
- Task 8: M&E Commune Land Use Plan

10. Which stakeholders are mostly invited in CLUP process (i.e., O’CLUP 2009)?

- Local residents Local NGOs International NGOs
- Civil Societies Public authority Elderly/Disable
- IPs Minority Private company
- Women with many children Low-income group LGBT

11. Based on your opinion, is the public, particularly vulnerable groups and IP, involved in CLUP?

Participants	Level of Participation	
1. General public	<input type="checkbox"/> Should	<input type="checkbox"/> Should not
2. Elderly/Disable	<input type="checkbox"/> Should	<input type="checkbox"/> Should not
3. IPs	<input type="checkbox"/> Should	<input type="checkbox"/> Should not
4. Women	<input type="checkbox"/> Should	<input type="checkbox"/> Should not
5. Low-income group	<input type="checkbox"/> Should	<input type="checkbox"/> Should not
6. LGBT group	<input type="checkbox"/> Should	<input type="checkbox"/> Should not
7. Local NGO	<input type="checkbox"/> Should	<input type="checkbox"/> Should not
8. International NGO	<input type="checkbox"/> Should	<input type="checkbox"/> Should not
9. Civil Society	<input type="checkbox"/> Should	<input type="checkbox"/> Should not
10. Private company	<input type="checkbox"/> Should	<input type="checkbox"/> Should not

12. Based on your opinion, at which stage is the public, particularly vulnerable groups and IP, involved in CLUP?

Participants	1	2	3	4	5	6	7	8
1. General public								
2. Aged/disabled								
3. IPs								
4. Women with many children								
5. Low-income family								
6. LGBT								
7. Local NGOs								
8. International NGOs								
9. Civil Societies								
10. Private companies								

13. Why are some groups not invited in O'CLUP 2009?

- level of education
- level of interest
- personal profit
- political conflict
- religious conflict
- men dominant
- Others:

14. To what extent, is the public, including particularly vulnerable groups and IP, involved in CLUP?

Participants	Level of Participation		
1. General public	<input type="checkbox"/> Low	<input type="checkbox"/> Moderate	<input type="checkbox"/> High
2. Aged/Disable	<input type="checkbox"/> Low	<input type="checkbox"/> Moderate	<input type="checkbox"/> High
3. IPs	<input type="checkbox"/> Low	<input type="checkbox"/> Moderate	<input type="checkbox"/> High
4. Women	<input type="checkbox"/> Low	<input type="checkbox"/> Moderate	<input type="checkbox"/> High
5. Low income group	<input type="checkbox"/> Low	<input type="checkbox"/> Moderate	<input type="checkbox"/> High
6. LGBT	<input type="checkbox"/> Low	<input type="checkbox"/> Moderate	<input type="checkbox"/> High

15. Do you think that the public participation of CLUP from everyone inclusively is important to the development of the community?

- Yes
- No
- Maybe

16. What are the adverse impacts of limited public participation of CLUP on the sustainable development of the community?

- conflicts during/post CLUP implementation
- CLUP planning is not put in real practice
- CLUP planning does not meet the actual needs of the residents
- Benefit loss for the residents (i.e., the residents do not know about the development project and then sell their properties in low price)
- others:

17. Have you ever heard of "project outreach activities", "Public disclosure", "Stakeholder Engagement Plan", and "Grievance Redress Mechanism",?

Definition:

a) **Project outreach:** refers to the public outreach to the general public living in the target commune about the purpose of CLUP via public events, brochures, short videos, or other types of announcements before the project implementation.

- Yes No Maybe

Based on your opinions, is **Project Outreach** important in the CLUP process?

- Low Moderate High

b) **Project disclosure:** refers to the public display of the result obtained from the CLUP discussion to all stakeholders, especially the affected people due to the project.

- Yes No Maybe

Based on your opinions, is **Project disclosure** necessary in the CLUP process?

- Low Moderate High

c) **Stakeholder Engagement Plan:** refers to the plan that encourages all stakeholders to involve in related activities in the CLUP process to receive information about the plan and to raise their voices about the issues and solutions occurring in the pre/during/post project preparation.

- Yes No Maybe

Based on your opinions, is **Stakeholder Engagement Plan** necessary in the CLUP process?

- Low Moderate High

d) **Grievance Redress Mechanism:** refers to the mechanism to address all related grievances by all stakeholders affected by the project. The affected groups are capable of requesting any solutions/responses from the project workers if they think that the project could negatively affect to their livelihood or their existing benefits.

- Yes No Maybe

Based on your opinions, is **Grievance Redress Mechanism** necessary in the CLUP process?

- Low Moderate High

18. Is focus group discussion used in the CLUP process?

- Yes No Sometimes: reason.....

19. If focus group discussion is used, how effective is it?

- Low Moderate High

20. Based on your opinion, how can we improve social inclusion in CLUP process?

.....
.....

Appendix 3: Questionnaire for the residents in O’Krieng commune

Interviewee			Phone Number	
Position			Email	
Interviewer			Date	

Purpose of the research:

- To deeply understand the level of social inclusion in CLUP process
- To be aware of the limitation of diversity in CLUP process and its issues

Questions:

A. General information

1. Were you born in O’Krieng commune or migrate here?
 - born here migrants
2. How long have you been living in in O’Krieng commune?
 - currently to 2 years 2-5 years 5-10 years more than 10 years
3. Is there any land use and infrastructure development, such as road system, canal, schools, markets, hospitals, and public space in your village compared to 2009?
 - Slightly develop Remarkably develop
4. Is there any land use and infrastructure development, such as road system, canal, schools, markets, hospitals, and public space in your village compared to the last 5 years?
 - Slightly develop Remarkably develop
5. Have you ever heard about these developments?
 - Yes No
6. If “Yes”, where did you get this information?
 - Family members Neighbour school or workplace pagoda or religious temple
 - markets or retail shops Media Authorities leisure place
 - others:

B. Public Participation in CLUP process

7. Have you ever heard of CLUP?
 - Yes No (move to 10) Maybe
8. If “Yes”, where did you get this information?
 - Family members Neighbour school or workplace pagoda or religious temple
 - markets or retail shops Media Authorities leisure place
 - others:

9. Have you ever invited in CLUP process?

- Yes No Maybe

10. In O'CLUP 2009, was you invited to the process?

- Yes No Maybe

If "Yes", in which stage:

- Stage 1: Preparation of Land Use Map
- Stage 2: Verification and update development objectives
- Stage 3: Finalization of support maps
- Stage 4: Assist in Commune Investment Program project design
- Stage 5: Prepare draft commune land use plan
- Stage 6: Support at District Integration Workshop
- Stage 7: Map finalisation for Commune Investment Program
- Stage 8: M&E Commune Land Use Plan

11. As a local resident, should you be invited to the CLUP process?

- Yes No Maybe

If "No", why?

- time consumption level of education level of interest
- personal profit men dominant political conflict
- others:

12. Do you think that the public participation of CLUP from everyone inclusively is important to the development of the community?

- Yes No Maybe

13. What are the adverse impacts of limited public participation of CLUP on the sustainable development of the community?

- conflicts during/post CLUP implementation
- CLUP planning is not put in real practice
- CLUP planning does not meet the actual needs of the residents
- Benefit loss for the residents (i.e., the residents do not know about the development project and then sell their properties in low price)
- others:

14. Have you ever heard of "project outreach activities", "Public disclosure", "Stakeholder Engagement Plan", and "Grievance Redress Mechanism",?

Definition:

a) **Project outreach:** refers to the public outreach to the general public living in the target commune about the purpose of CLUP via public events, brochures, short videos, or other types of announcements before the project implementation.

- Yes No Maybe

Based on your opinions, is **Project Outreach** important in the CLUP process?

- Low Moderate High

b) **Project disclosure:** refers to the public display of the result obtained from the CLUP discussion to all stakeholders, especially the affected people due to the project.

- Yes No Maybe

Based on your opinions, is **Project disclosure** necessary in the CLUP process?

- Low Moderate High

c) **Stakeholder Engagement Plan:** refers to the plan that encourages all stakeholders to involve in related activities in the CLUP process to receive information about the plan and to raise their voices about the issues and solutions occurring in the pre/during/post project preparation.

- Yes No Maybe

Based on your opinions, is **Stakeholder Engagement Plan** necessary in the CLUP process?

- Low Moderate High

d) **Grievance Redress Mechanism:** refers to the mechanism to address all related grievances by all stakeholders affected by the project. The affected groups are capable of requesting any solutions/responses from the project workers if they think that the project could negatively affect to their livelihood or their existing benefits.

- Yes No Maybe

Based on your opinions, is **Grievance Redress Mechanism** necessary in the CLUP process?

- Low Moderate High

15. Based on your opinion, should public participation improve in CLUP process?

- Yes No

16. If "Yes", why?

- Promote better understanding to the local residents and related stakeholders in the entire process of CLUP
- Encourage the local residents and related stakeholders to raise their voices and fully make decision openly without threatening
- Encourage the local residents to use their rights in participating in commune planning
- Reduce conflict during/post CLUP process
- Others:

17. Do you have other solutions to improve social inclusion in CLUP process?

.....

.....

.....

.....

.....

Appendix 4: Questionnaire for focus group discussion in O’Krieng commune

Interviewee			Phone Number	
Position			Email	
Interviewer			Date	

Purpose of the research:

- To deeply understand the level of social inclusion in CLUP process
- To be aware of the limitation of diversity in CLUP process and its issues

Questions:

A. General information

1. Were you born in O’Krieng commune or migrate here?

- born here migrants

2. How long have you been living in in O’Krieng commune?

- currently to 2 years 2-5 years 5-10 years more than 10 years

3. Is there any land use and infrastructure development, such as road system, canal, schools, markets, hospitals, and public space in your village compared to 2009?

- Slightly develop Remarkably develop

4. Is there any land use and infrastructure development, such as road system, canal, schools, markets, hospitals, and public space in your village compared to the last 5 years?

- Slightly develop Remarkably develop

5. Have you ever heard about these developments?

- Yes No

6. If “Yes”, where did you get this information?

- Family members Neighbour school or workplace pagoda or religious temple
- markets or retail shops Media Authorities leisure place
- others:

B. Public Participation in CLUP process

7. Have you ever heard of CLUP?

- Yes No (move to 9) Maybe

8. Have you ever invited in CLUP process?

- Yes No Maybe

9. In O’CLUP 2009, were you invited to the process?

- Yes No Maybe

If “Yes”, in which stage:

- Stage 1: Preparation of Land Use Map
- Stage 2: Verification and update development objectives
- Stage 3: Finalization of support maps
- Stage 4: Assist in Commune Investment Program project design
- Stage 5: Prepare draft commune land use plan
- Stage 6: Support at District Integration Workshop
- Stage 7: Map finalisation for Commune Investment Program
- Stage 8: M&E Commune Land Use Plan

10. As a vulnerable group, should you be invited to the CLUP process?

- Yes No Maybe

If “No”, why?

- time consumption level of education level of interest
- personal profit men dominant political conflict
- others:

12. Do you think the public participation of CLUP from everyone inclusively is important to the development of the community?

- Yes No Maybe

13. What are the adverse impacts of limited public participation of CLUP on the sustainable development of the community?

- conflicts during/post CLUP implementation
- CLUP planning is not put in real practice
- CLUP planning does not meet the actual needs of the residents
- Benefit loss for the residents (i.e., the residents do not know about the development project and then sell their properties in a low price)
- others:

14. Have you ever heard of “project outreach activities”, “Public disclosure”, “Stakeholder Engagement Plan”, and “Grievance Redress Mechanism”?

Definition:

e) **Project outreach:** refers to the public outreach to the general public living in the target commune about the purpose of CLUP via public events, brochures, short videos, or other types of announcements before the project implementation.

- Yes No Maybe

Based on your opinions, is **Project Outreach** important in the CLUP process?

- Low Moderate High

f) **Project disclosure:** refers to the public display of the result obtained from the CLUP discussion to all stakeholders, especially the affected people due to the project.

- Yes No Maybe

Based on your opinions, is **Project disclosure** necessary in the CLUP process?

- Low Moderate High

g) **Stakeholder Engagement Plan:** refers to the plan that encourages all stakeholders to involve in related activities in the CLUP process to receive information about the plan and to raise their voices about the issues and solutions occurring in the pre/during/post project preparation.

- Yes No Maybe

Based on your opinions, is **Stakeholder Engagement Plan** necessary in the CLUP process?

- Low Moderate High

h) **Grievance Redress Mechanism:** refers to the mechanism to address all related grievances by all stakeholders affected by the project. The affected groups are capable of requesting any solutions/responses from the project workers if they think that the project could negatively affect to their livelihood or their existing benefits.

- Yes No Maybe

Based on your opinions, is **Grievance Redress Mechanism** necessary in the CLUP process?

- Low Moderate High

15. Based on your opinion, should public participation improve in CLUP process?

.....

.....

.....

.....

.....

Appendix 5: Consent Form

Consent Form

Research topic: Social inclusion in Commune Land Use Planning in Cambodia, a case study OF O’KRIENG COMMUNE, KRATIE PROVINCE

Interviewer name:.....	Date)day/month/year(:
Village:	Commune: O’Krieng
Interviewee name:	Telephone:

Hello! My name isand I am a research team working on a research project related to public participation in the commune-level land use planning process in O’Krieng district, Kratie province, Cambodia.

The purpose of this study is to understand the involvement of stakeholders in in-depth land use planning at the commune level and to understand the benefits and potential issues that may arise in the absence of participation. We have randomly selected you to take part in this important study. We will keep the answers you provide confidential and will not affect your future information, and we will not even take your phone number. . All the answers you give us will be combined with answers from others and it will not be possible to identify anyone in the results. Your participation is voluntary. You will not directly benefit from participating. For some questions that you find difficult to answer, you have the right to join or not enter, stop at any time and skip any questions you do not want to answer. There is no right or wrong answer, our team just wants to understand your point of view. The interview will take up to 20-30 minutes to complete. Do you have time for me to ask you some questions now?

A. Do you agree to participate in this study?

Yes. I agree to participate in this study.

No. I do not agree to participate in this study right now.

Interviewer - If the potential interviewee answers no, thank them for their time and end the conversation.

B. Do you want to provide information about the role, phone number and email to contact our team? (Only interviews with CLUB experts and local authorities in O’Krieng commune)

Yes. I agree.

Position

Phone number

Email

No. I do not agree.

If you would like to contact our research team later, you can call our research team at

017367 557/086351531

Interviewer Signature: _____

Thank you for your time